



# MONTHLY MEMBERSHIP PROGRESS REPORT

District 201V3

Results as of: 11/30/2017

GMT: WAYNE OAKES

LOCATION AUSTRALIA

GMT CA

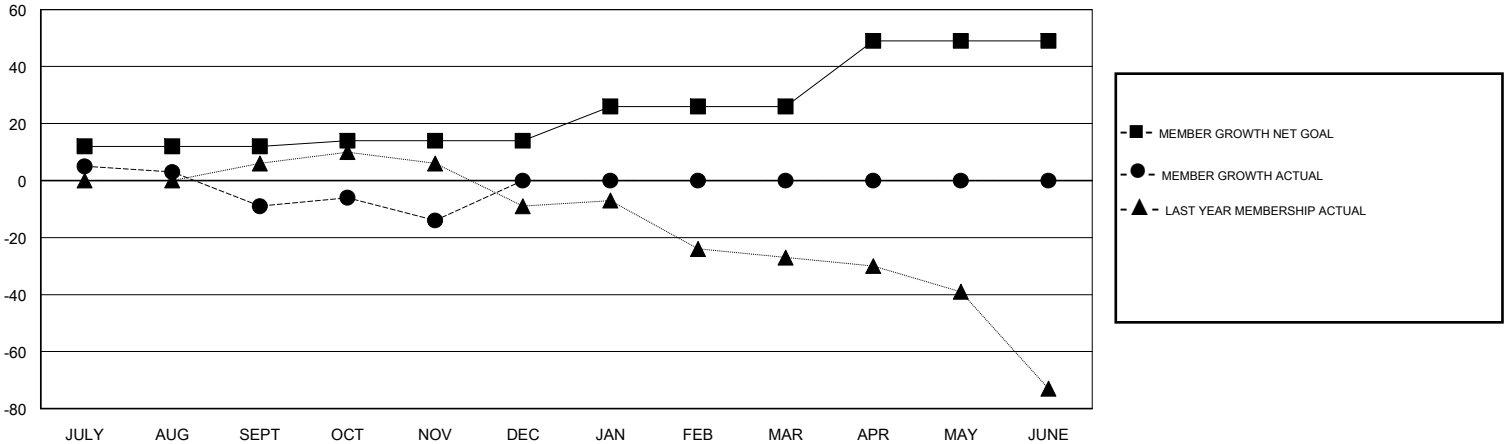
Clubs			
RESULTS FOR 2017-2018			
QUARTER	NEW CLUB GOAL	NEW CLUBS	DROPPED CLUBS
JULY/AUG/SEPT	0	0	0
OCT/NOV/DEC	0	0	0
JAN/FEB/MAR	0	0	0
APR/MAY/JUNE	1	0	0

Members			
RESULTS FOR 2017-2018			
QUARTER	MEMBER GROWTH NET GOAL	MEMBER GROWTH ACTUAL	DROPPED MEMBERS ACTUAL (including transfers)
JULY/AUG/SEPT	12	44	47
OCT/NOV/DEC	2	27	29
JAN/FEB/MAR	12	0	0
APR/MAY/JUNE	23	0	0

GOALS AND ACTUAL NEW CLUBS CUMULATIVE



GOALS AND ACTUAL MEMBERS CUMULATIVE



DROPPED CLUBS: 0	23 CLUBS OF 63 ADDED 1 OR MORE NEW MEMBERS	<u>GENDER DISTRIBUTION</u>	
DROPPED MEMBERS		MALE	897 (71.82%)
DECEASED	7	FEMALE	352 (28.18%)
CLUB CANCELLED	0	Women Percentage Fiscal Year Goal: 38%	
OTHER	69	<a href="#">CLICK HERE FOR CUMULATIVE MEMBERSHIP DATA</a>	
TOTAL	76	TOTAL FAMILY UNIT MEMBERS	195
		FAMILY MEMBERS PAYING HALF DUES	98